

MANUFACTURE STANDARD, MANUFACTURE RELIANCE

RT-6500

Microplate Reader

NEW

WHAT'S NEW

340NM UV WAVELENGTH

TEMPERATURE CONTROL

KINETIC TEST

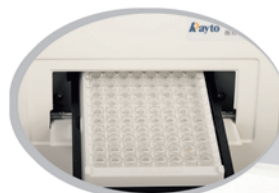


Features

- UV wavelength available, including 340nm
- End Point, Fixed time, Kinetic
- Temperature control (optional), incubation time and temperature adjustable
- PC controlled system, Windows XP
- 8-channel optical fiber system enables 6 secs' reading for the whole plate
- More than 500 programs and minimum 100,000 results can be stored
- Powerful QC programs including Westgard Multi-rule and Instant method, automatic alarm
- Calculation modes include ABS, Cut-Off, Single standard Curve, Multi-percent Linear, Log, Exponential, Power and 4PL regression, etc.
- Auto self-check when power on, with lamp saving and plate shaking
- Random positive and negative control setting
- Multi-assay enables up to 12 different assays on one plate

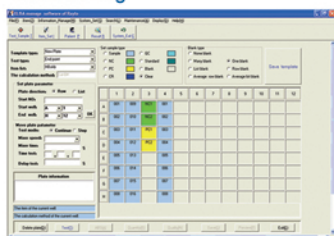
RT-6500

Microplate Reader

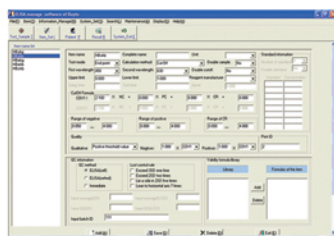


Report					
Name:John	Sex:male	Age:25	Sample NO:005		
Medical NO: xxx	Section: xxx	Area: xxx	Sender:Lisa		
Bed NO:008	Diagnosis:		Send date:20/10/2006		
Program	Full name	Result	Unit	Neg/Pos	Reference range
HbsAg		0.168	s/cov.	Neg-	0.000-1.000
HbsAb		0.568	s/cov.	Neg-	0.000-1.000
HIV		0.685	s/cov.	Neg-	0.000-1.000
HCV		1.259	s/cov.	Pos+	0.000-1.000
ALT		5.000	u/l	Neg-	8-40
Print date:20/10/2006 Test date:20/10/2006 Operator: Checker:					

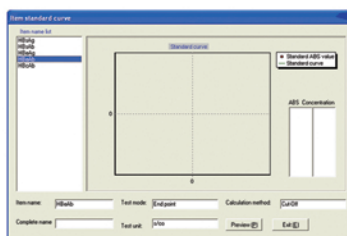
Plate setting



Programming



Calibration



Technical Specifications

Absorbance Range	0.000-4.000Abs
Resolution	0.001Abs(displayed),0.0001Abs(calculated)
Wavelengths	340,405, 450, 492, 630nm, 3 more filters optional
Wavelength Accuracy	± 3nm
Band Width	<8nm
Methodologies	End Point, Fixed time, Kinetic
Calculation Method	ABS, Cut-Off, Single Standard, Curve, Multi-Percent, Percent Log, Linear, Exponential, Log,Power, 4PL Regression
Reading Speed	6 seconds for 96 well plate (Single wavelength)
Shaking Plate	Shaking time and speed adjustable
Plate Incubation	Ambient temperature+4~ 45°C, adjustable
Optic System	8-channel optic fiber system
Light Source	Halogen lamp
Operation	PC operation, bidirectional communications
Memory	More than 500 programs, up to 100,000 test results
Printer	All printers compatible with Windows
Interface	RS-232
Power Requirement	AC 100V-240V,50Hz/60Hz
Net Weight	9 KG
Dimensions	L × W × H(mm):186×440×220



Rayto Life and Analytical Sciences Co.,Ltd.

Rayto Industrial Building, Shuangming Blvd South,
East Hi-Tech Park, Guangming New District,
518107 Shenzhen, P.R.China.
Tel:+86(755)88832350 Fax:+86(755)86168796
Email:info@rayto.com